

HURRY...  
ONLY 1 HOME  
REMAINING



# The Langtons

REDMARSHALL

HOMES *by* CARLTON

[homesbycarlton.com](http://homesbycarlton.com)





WELCOME TO

# The Langtons

*An exclusive collection of 3, 4 and  
5-bedroom luxury homes perfectly  
placed in the traditional country  
village of Redmarshall.*

---

Please note that all images, plans, elevations, dimensions, finishes, specifications and layouts are for illustration purposes only and can be changed by us at any time. They are not to be relied upon and do not form part of any contract or constitute a warranty. Any dimensions given should not be used for carpet or flooring sizes, appliance spaces or items of furniture. Please consult with the Sales Adviser in respect of individual properties.





# Stylish living spaces





The Langtons is a bespoke designed collection of just eleven family homes situated within the desirable village of Redmarshall, to the west of Stockton-on-Tees and 6 miles north of the popular market town of Yarm.

The picture perfect village of Redmarshall has all the benefits of country living, but with an excellent road network nearby. Links to the A66, A19 and A1 connect Redmarsall with all the major towns and cities in the North East, meaning every amenity is easily accessible and within a maximum 50-minute drive.

What a perfect place for your forever home!



Stockton Station  
4 miles (10 minutes)

Teesside International Airport  
7.6 miles (11 minutes)

Middlesbrough City Centre  
9.5 miles (13 minutes)

Yarm  
6 miles (13 minutes)

Darlington Station  
8.9 miles (17 minutes)

Durham City Centre  
22 miles (29 minutes)

Newcastle City Centre  
35 miles (41 minutes)

Newcastle Airport  
41 miles (47 minutes)





# Country Style Dining

Just a stone's throw away from The Langtons is Redmarshall's newly refurbished country style pub, The Ship. With something for everyone, this charming local pub caters for foodies, drink connoisseurs, music lovers, dog owners and families big and small. They are even horse friendly!

Nearby Darlington and the delightful town of Yarm are within easy driving distance and offer a vast array of delightful and different cafes, bistros and restaurants. And it doesn't stop there, The Langtons' perfect rural setting gives you access to a fabulous range of country pubs and restaurants in the surrounding villages and towns.

For something a bit more special, there is fine dining in the glorious setting of The Wellington Restaurant at Wynyard Hall or The Raby Hunt, led by Chef Patron James Close and the North East's first and only two star Michelin restaurant.

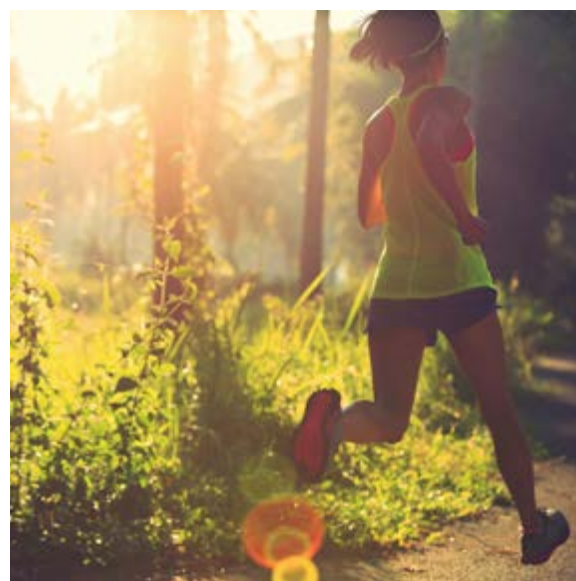






# Space to Entertain





# Living the Country Life

The Langtons is located in the peaceful village of Redmarshall, surrounded by woodlands and rural landscapes that provide fantastic views and plenty of choice of activities for those who enjoy the great outdoors.

Several country parks are close by, all with interesting nature trails and cycle paths, there is even Dogwood Adventure Play, designed specifically for your four-legged friend!

A short drive away is the enchanting Wynyard Woodland Park. The park started its life as working railway carrying freight to the ports along the River Tees. That former railway line has been transformed and offers visitors to the park the ideal route for walking, cycling and exploring. There is also access to the wider park area including Thorpe Wood Nature Reserve, Tilery and Brierley Woods and the splendid newly established wildflower haven, Pickard Meadows.

With an excellent café serving tasty treats in the former station house, a nearby woodland adventure play area and a planetarium and observatory, there really is something for everyone and all on your doorstep. What a perfect place to live!





# The Langtons

REDMARSHALL

A beautifully designed development of just eleven forever homes in a thoughtfully planned layout that maximises space and privacy for everyone.

There are six unique house types allowing you to choose the home that has been configured to suit your needs. Each property has expertly designed front and back gardens and throughout the community, there are additional green spaces making your surrounding environment calming and cloistered.

The Langtons can be found, off Drovers Lane in the beautiful village of Redmarshall.

## HOMES *by* CARLTON

For illustration purposes only

HURRY...  
ONLY 1 HOME  
REMAINING



## Development Layout



**THE BELFORD**  
(4-Bed detached)  
Plot: 11



**THE CLEVEDON**  
(5-Bed detached)  
Plots: 2, 6



**THE ALFORD**  
(4-Bed detached)  
Plots: 8, 9



**THE DESNING**  
(5-Bed detached)  
Plot: 1



**THE DAMSON**  
(3-Bed semi detached)  
Plots: 3, 4



**THE BROMLEY**  
(4-Bed detached)  
Plots: 5, 7, 10





The Belford at The Langtons  
For illustration purposes only. Elevational treatments may vary.





# The Langtons

REDMARSHALL



## The Clevedon

5-bedroom detached home with  
double integral garage



## The Desning

5-bedroom detached home with  
separate double garage



## The Bromley

4-bedroom detached home  
with double garage



## The Belford

4-bedroom detached home  
with single integral garage



## The Alford

4-bedroom detached home with  
single integral garage



## The Damson

3-bedroom semi detached with  
single integral garage





LAST HOME  
REMAINING



# The Belford

4-bedroom detached home with single integral garage

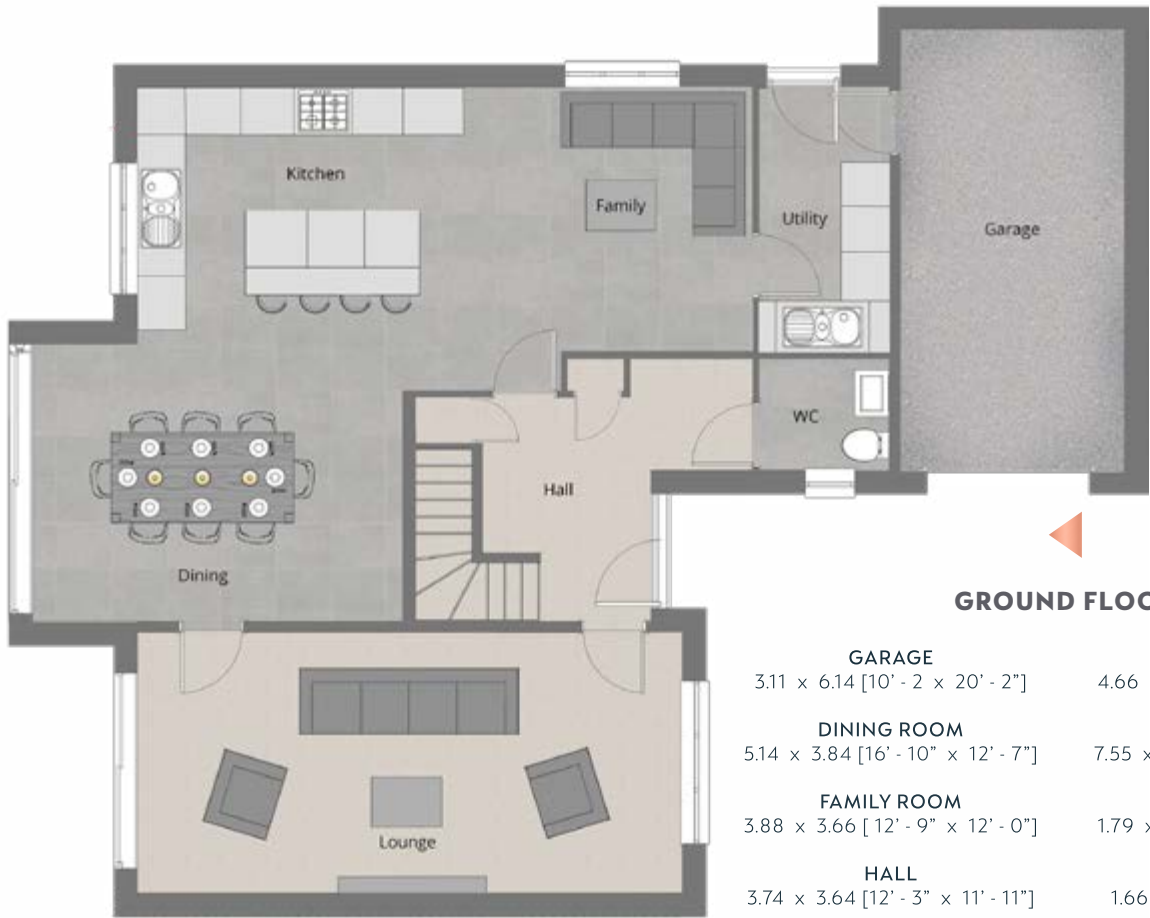
The Belford is a spacious, 4-bedroom detached executive home with an integral single garage, offering exceptional family living space.

Entering the Belford, you are welcomed with a double-height entrance hall and a feature staircase paired with a galleried landing, leading to the spacious, open-plan kitchen, dining area and family room.

Anthracite sliding doors open to reveal the large turfed garden which is perfect for spending quality time with family and friends.

A separate contemporary lounge and study, which can be accessed from the main hallway and also the dining area, complete the stunning ground floor along with a well fitted utility room and cloakroom.

The first floor features a galleried landing introducing the indulgent Master bedroom completed with a Juliet balcony, walk-in dressing room and exquisite en-suite bathroom. The second double bedroom also contains an en-suite bathroom and shower. Two further double bedrooms and stylish family bathroom, which includes a spacious shower and egg-shaped bath, complete this beautiful, executive home.







# Contemporary bathrooms

For illustration purposes only



# The Homes by Carlton difference

Exquisite design, materials, workmanship and detailing mean every home at The Langtons offers exceptional levels of specification with unique interior design options, allowing you to make yours a truly personal statement.

## *Location and Lifestyle*

We know there's more to creating the perfect home than just the property itself. Finding the right location is just as important.

We are committed to choosing sites that offer something different. Sites with more established settings and character, creating a place for your perfect home.

## *Architecture and Design*

We are privileged to work with a talented design team to create our homes. Their talent gives every one of our developments its own unique characteristics.

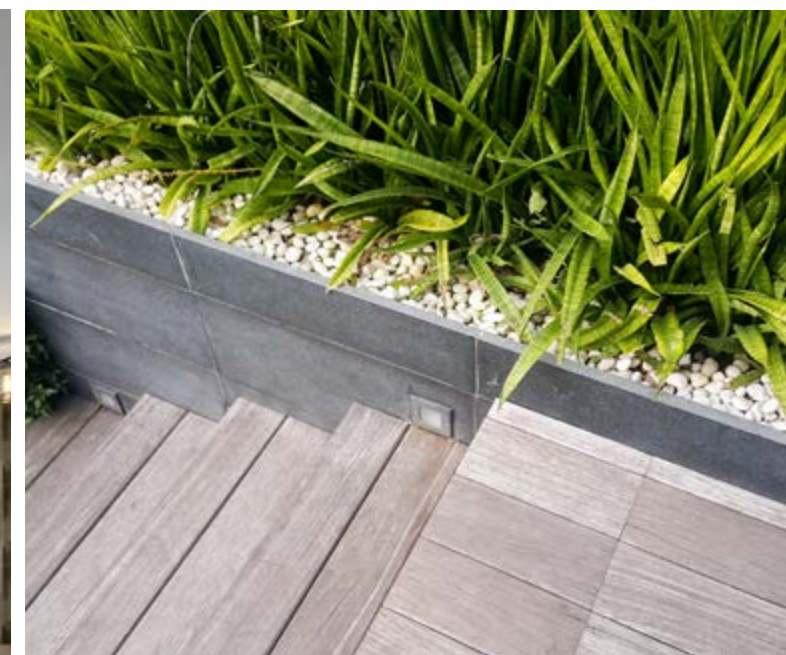
The design team works tirelessly to make sure every detail is right. Indeed it's this meticulous attention to detail which sets us apart from others.

## *External Materials*

From the facing bricks to the roof finishes, the external material palette has been carefully selected to create its own style and character.







### *Interior Design and Choice*

Our talented and passionate interior design team continually scour the world for emerging trends, materials and techniques to create dream homes to suit all tastes. Of course not everyone's taste is the same, which is why Homes by Carlton will give you as much choice as possible provided you reserve your home at an early enough stage in the development.

### *Landscaping*

We think the exterior spaces of your home are just as important as the interiors. They complement the character of the house and provide a spectacular backdrop to your new lifestyle. We won't leave you to your own devices with your landscaping as many other house builders do – all of our homes feature turfed rear gardens and fully landscaped front gardens expertly prepared and ready when you move in.



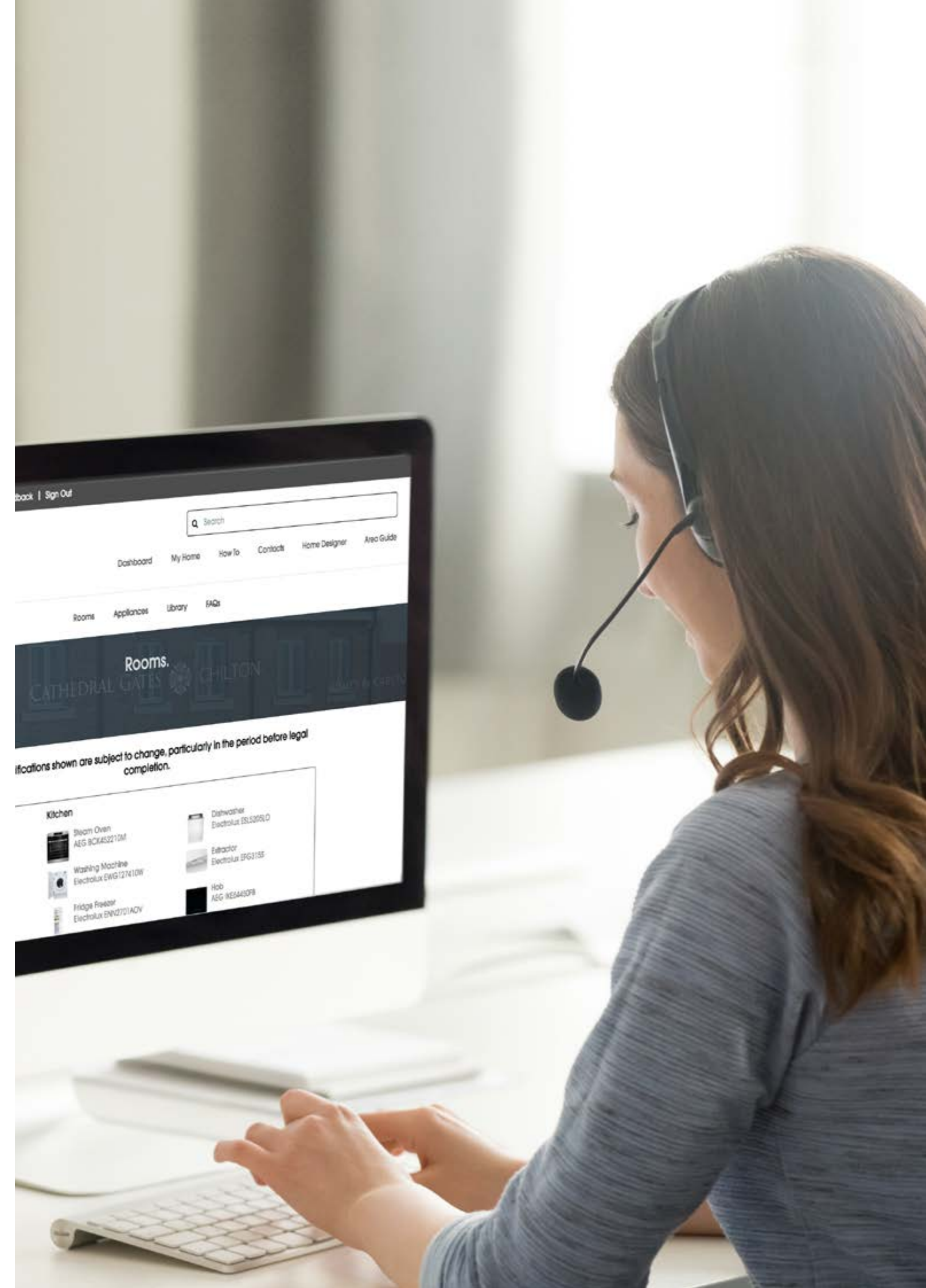


# Homes by Carlton Customer Care

From the initial build of your home through to post-handover customer care, the entire Homes by Carlton team are dedicated to delivering a service that's second-to-none.

Your Sales Manager will be around to answer questions both before and after move-in day, and your Site Manager will provide a detailed Home Demonstration to help you get to know your home and how to take care of it.

Once you're settled in, our Customer Care Team will be on-hand to ensure everything continues to go smoothly. And in the unlikely event there are any issues with your new home, rest assured we'll be there to help\*.







# Our story

The Carlton Group of companies was founded almost 20 years ago and established a reputation for building high quality homes in the North East and Yorkshire.

We are now focusing our attention on more traditional family homes, drawing on the wealth of experience and expertise gained in the bespoke end of the housing market. The team are bringing a new level of style and sophistication to a much wider, but equally discerning client. We pride ourselves on our ability to deliver levels of service and quality which is second to none within our industry.

Every home we build is treated as if it was for our own occupation. Working alongside our award-winning design team we spend hours carefully revising design details until they're just right.

## HOMES *by* CARLTON







A place to relax

For illustration purposes only



# How to find your perfect home

*The Langtons is located just off Drovers Lane, Redmarshall, TS21 1EL.*



For further information or to book an appointment please contact our sales team.

Call: **0333 034 1355**

Or email: **[sales@homesbycarlton.com](mailto:sales@homesbycarlton.com)**

Visit us online: **[www.homesbycarlton.com](http://www.homesbycarlton.com)**

Please note that all images, plans, elevations, dimensions, finishes, specifications and layouts are for illustration purposes only and can be changed by us at any time. They are not to be relied upon and do not form part of any contract or constitute a warranty. Any dimensions given should not be used for carpet or flooring sizes, appliance spaces or items of furniture. Please consult with the Sales Adviser in respect of individual properties.

HOMES *by* CARLTON

# Our luxury developments



**Middleton Waters**

MIDDLETON ST GEORGE

Overlooking picturesque fields and ponds, this beautiful collection of 3, 4 and 5-bedroom family homes are perfectly placed in the idyllic village of Middleton St George. Local amenities, attractions and glorious countryside are just a peaceful stroll away.



**The Langtons**

REDMARSHALL

An exclusive development of only 11 executive homes. Distinctly designed and situated in the sought after village of Redmarshall, this unique collection of 3, 4 and 5-bedroom homes all have open views over the stunning Tees Valley countryside.



**Eastfields**

WHITTON

An exclusive collection of beautifully designed 3, 4 and 5-bedroom homes situated in the charming village of Whitton. This lovely community of 9 luxury homes are close to all the village amenities with Honey Pot Woods on the doorstep.



**Beauford Park**

WITTON GILBERT

Beauford Park in Witton Gilbert is a stunning collection of 29 3, 4 and 5-bedroom detached and semi-detached family homes designed to offer you more luxury as standard. Just 4 miles from bustling Durham City, Beauford Park is the perfect place to live.



**Saxon Vale**

SADBERGE

A beautifully designed development of 46 forever homes placed in the pretty village of Sadberge. There are 10 unique house types and each property has expertly designed front and back gardens. Saxon Vale can be found off Darlington Road in the beautiful village of Sadberge.



**Woodberry Park**

STAINDROP

Woodberry Park is situated in the charming village of Staindrop nestled between bustling Barnard Castle and Darlington. This lovely community of 48 beautifully designed 2,3 and 4-bedroom homes are close to all the village amenities with Raby Castle on the doorstep.





# The Langtons

Live at The Langtons and your  
evening walks could be every bit as  
spectacular

---



HOMES *by* CARLTON

THE LANGTONS  
Drovers Lane  
Redmarshall  
TS21 1EL

[homesbycarlton.com](https://homesbycarlton.com)

Version 6.1 (Belford) - 11th July, 2023